

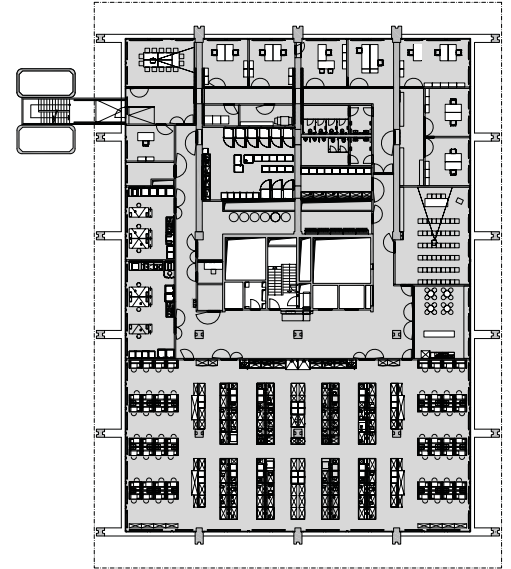
# RESEARCH LABORATORIES (CONVERSION FROM LIBRARY)

University Hospital Basel, building ZLF, Switzerland 2012- 2014

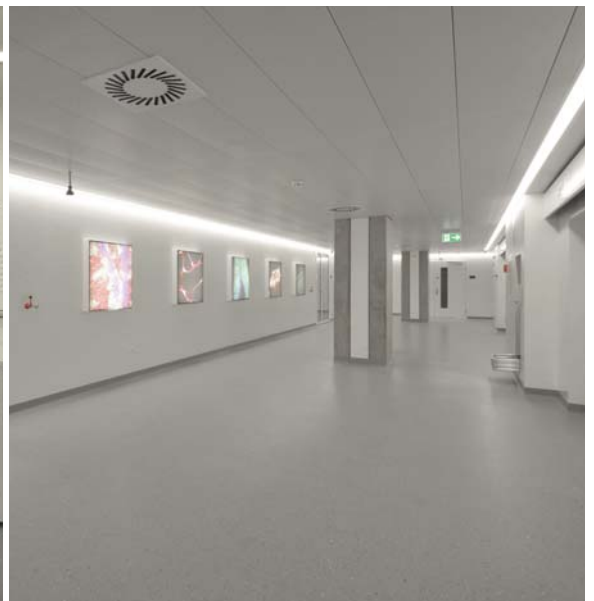
The 2nd floor in the existing six-story research building was the first stage (2013), previously used as a library, and now converted into a research laboratory. The house technical facilities had to be built or adapted. With the exception of the existing opening up core the room layout has been redesigned and optimized: A wet lab was set up as a metropolitan area, with different areas, the actual laboratory area is in a central location with flexible basic equipment for the different research groups, as well as spatially separated evaluation system places. More BSL2- laboratories, various equipment rooms, a large lounge, offices, meeting rooms, a large conference room and the toilet facilities were rebuilt.

The interventions were carried out during operation hours. The partially cross-plant stock house technical and static construction activities also affected the underlying floor with foyer and lecture halls and the overlying basement with research laboratories.

Further conversion stages were completed in 2014: The installation of a GMP clean room in 4th floor and laboratory reconstruction on the 3rd floor.



level 2 floor plan



**WIRTH+WIRTH** ARCHITEKTEN

Leimenstrasse 47, 4002 Basel, Switzerland  
Tel. +41 61 270 12 12 Fax +41 61 270 12 10  
wirth.basel@wirth-wirth.ch www.wirth-wirth.ch

**Project:** 2012- 2014

**Location:** Basel, Switzerland

**Use:** Laboratoriet GMP-labs, offices, seminar room

**Job description:** general planning & architecture

**Area:** 2,000 m<sup>2</sup>

**Client:** Universitätsspital Basel