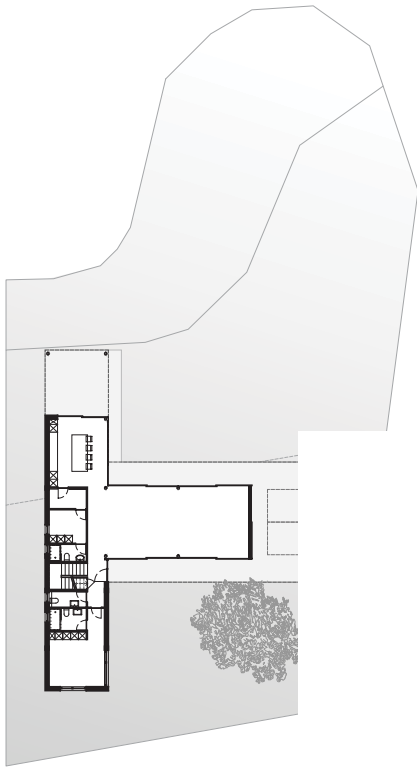


EINFAMILIENHAUS

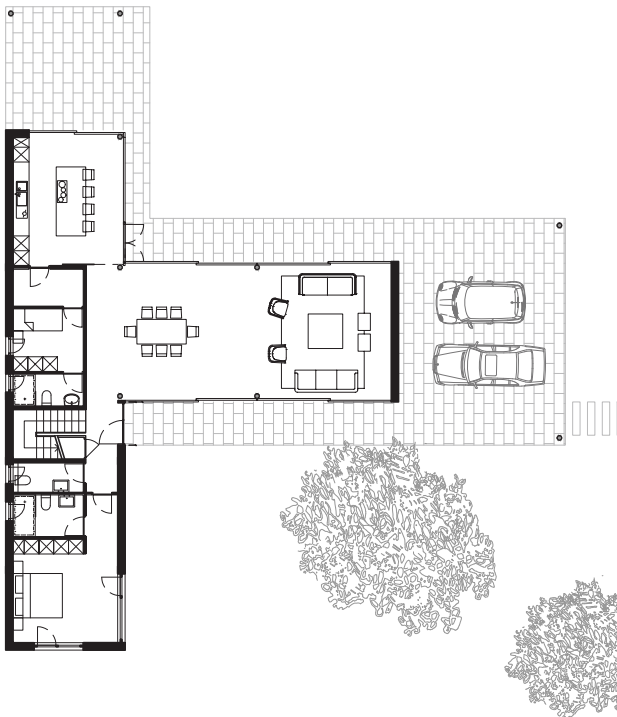
Playa Mendoza, Colombia 2015



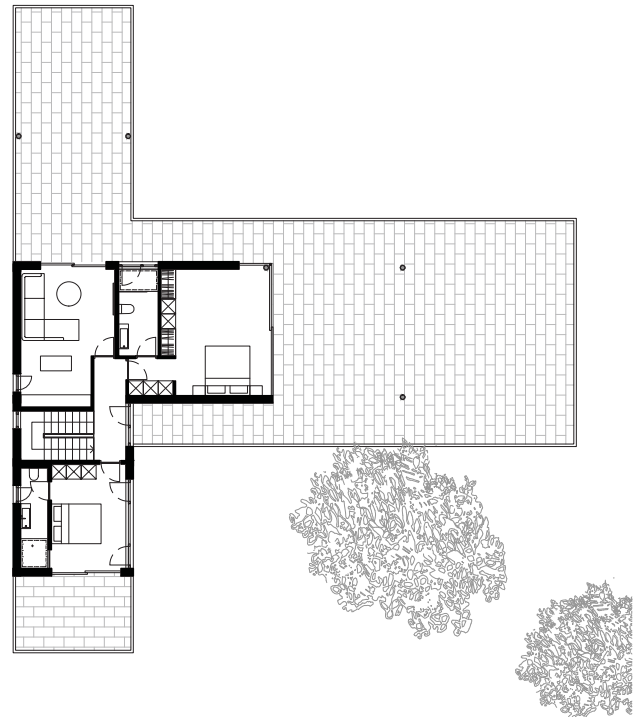
Situationsplan



Perspektive



Grundriss EG



Grundriss 1.OG

WIRTH+WIRTH ARCHITEKTEN

Leimenstrasse 47, 4002 Basel, Switzerland
Tel. +41 61 270 12 12 Fax +41 61 270 12 10
wirth.basel@wirth-wirth.ch www.wirth-wirth.ch

Projekt: 2015
Ort: Playa Mendoza, Colombia
Nutzungsart: Einfamilienhaus
Aufgabe: Bauprojekt
Bauherrschaft: Privat