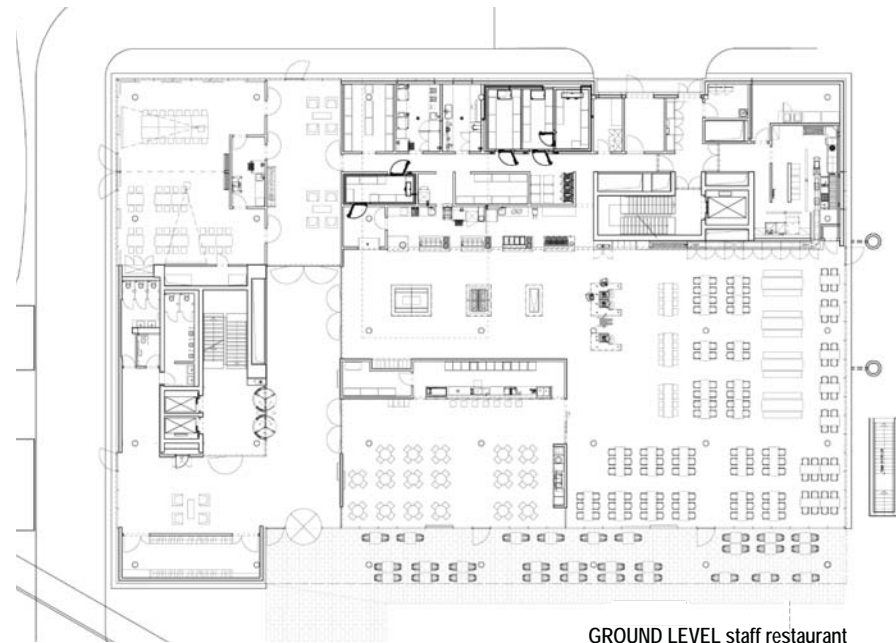


DSM OPEN-SPACE EXPANSION

building 242, Kaiseraugst, Switzerland. 2009- 2012

The newly completed restaurant of the DSM in Kaiseraugst caters daily over 500 lunches while offering an inviting coffee bar, which is often used as an informal meeting point, open all day. The kitchen and self-service areas achieve today's needs for diverse, healthy and freshly prepared diets, combined with an attractive presentation of this wide choice of products. The seating area gives the opportunities to have lunch or a snack in a snug niche as well as convivial benches or standing tables, thus reflecting the general concept of offering various spaces for different needs of communication that can be found in the upper floors hosting open-space offices for over 160 employees. Centrally oriented communication zone designed in order to integrate colleague and provide various working atmospheres with bright interior design of open-space improves creativity and office workflow.



GROUND LEVEL staff restaurant



level 1 & 2 open-space offices



think tanks & service points



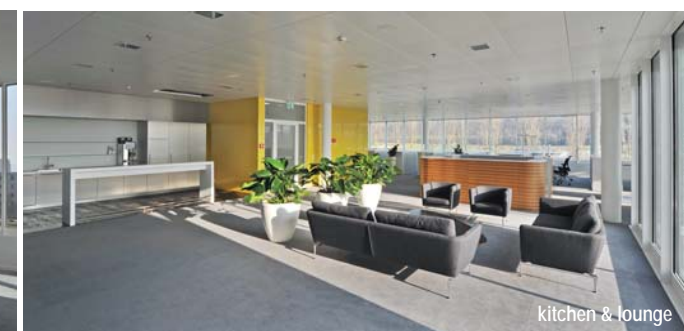
open-space table systems



elevation



conference room & terrace



kitchen & lounge



table system

WIRTH+WIRTH ARCHITEKTEN

Leimenstrasse 47, 4002 Basel, Switzerland
Tel. +41 61 270 12 12 Fax +41 61 270 12 10
wirth.basel@wirth-wirth.ch www.wirth-wirth.ch

Project: 2009 - 2012
Location: Kaiseraugst, Switzerland
Use: staff restaurant, open-space offices, conference rooms
Services performed: project study, general planning mandate for preliminary design & development, GU - specification, details - & detailed design, construction management
Area: 7'700 m²
Client: DSM Nutritional Products AG