

OPEN-SPACE BAYER

Bayer AG, Basel, Switzerland 2015

BCC AG, PMH OPEN OFFICES

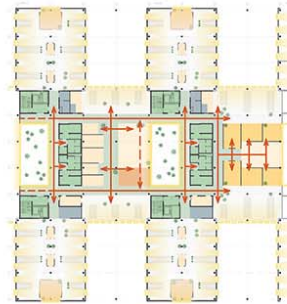
CONCEPT 2ND FLOOR M1:250



VISUALIZATION HUB AREA

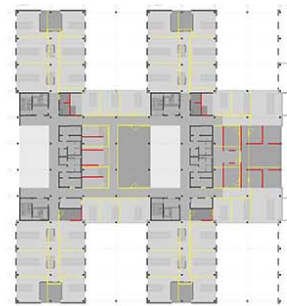


LIGHT AND CIRCULATION

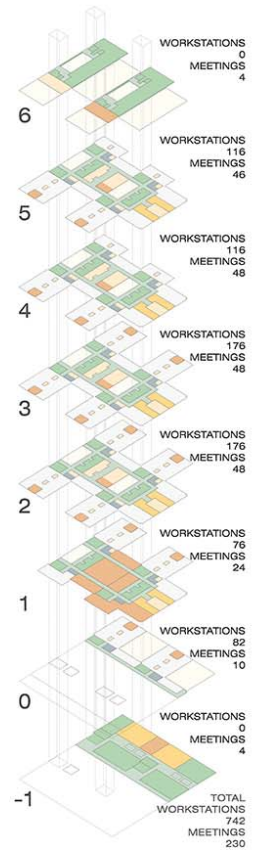


| 2ND FLOOR | | TOTAL PMH BCC | |
|-----------------|----------------|---------------|-----|
| | M ² | % | % |
| OFFICE FORMAL | 259 | 10% | 11% |
| OFFICE INFORMAL | 247 | 9% | 12% |
| SERVICE | 197 | 7% | 16% |
| CIRCULATION | 541 | 21% | 22% |
| TOTAL | 2.630 | | |

REORGANIZATION



AREAS AND FUNCTIONS



WIRTH+WIRTH ARCHITEKTEN

Leimenstrasse 47, 4002 Basel, Switzerland
Tel. +41 61 270 12 12 Fax +41 61 270 12 10
wirth.basel@wirth-wirth.ch www.wirth-wirth.ch

Project 2015
Location: Basel, Switzerland
Use: open-space office with coffee corner
Auftrag: competition, 2nd place
Area: 2'681 m²
Client Bayer AG